



4

CLARKE STUDIES #1

Musical staff 1 for Clarke Studies #1, measures 1-68. The staff contains a continuous sequence of eighth-note chords, primarily triads and dyads, moving in a stepwise fashion across the staff.

Musical staff 2 for Clarke Studies #1, measures 69-75. The staff continues the sequence of eighth-note chords from the previous staff.

Musical staff 3 for Clarke Studies #1, measures 76-82. The staff continues the sequence of eighth-note chords.

Musical staff 4 for Clarke Studies #1, measures 83-88. The staff concludes with a double bar line and a repeat sign (//).

5

CLARKE STUDIES #2

Musical staff 1 for Clarke Studies #2, measures 1-92. The staff contains a continuous sequence of eighth-note chords, similar to the first study but with some chromatic movement.

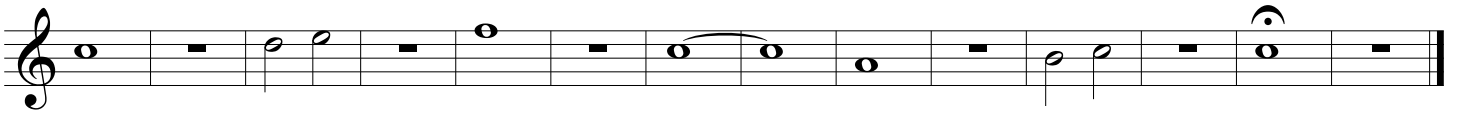
Musical staff 2 for Clarke Studies #2, measures 93-99. The staff continues the sequence of eighth-note chords.

Musical staff 3 for Clarke Studies #2, measures 100-106. The staff continues the sequence of eighth-note chords.

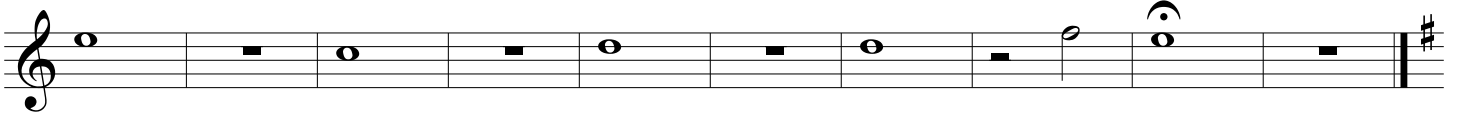
Musical staff 4 for Clarke Studies #2, measures 107-111. The staff concludes with a double bar line and a final chord.

Musical staff 5 for Clarke Studies #2, measures 112-112. The staff is empty, indicating the end of the piece.

6 **TUNING EXERCISE**



7 **BALANCE EXERCISE**



8 **CHORALE**

